



Advanced Manufacturing Research Centre

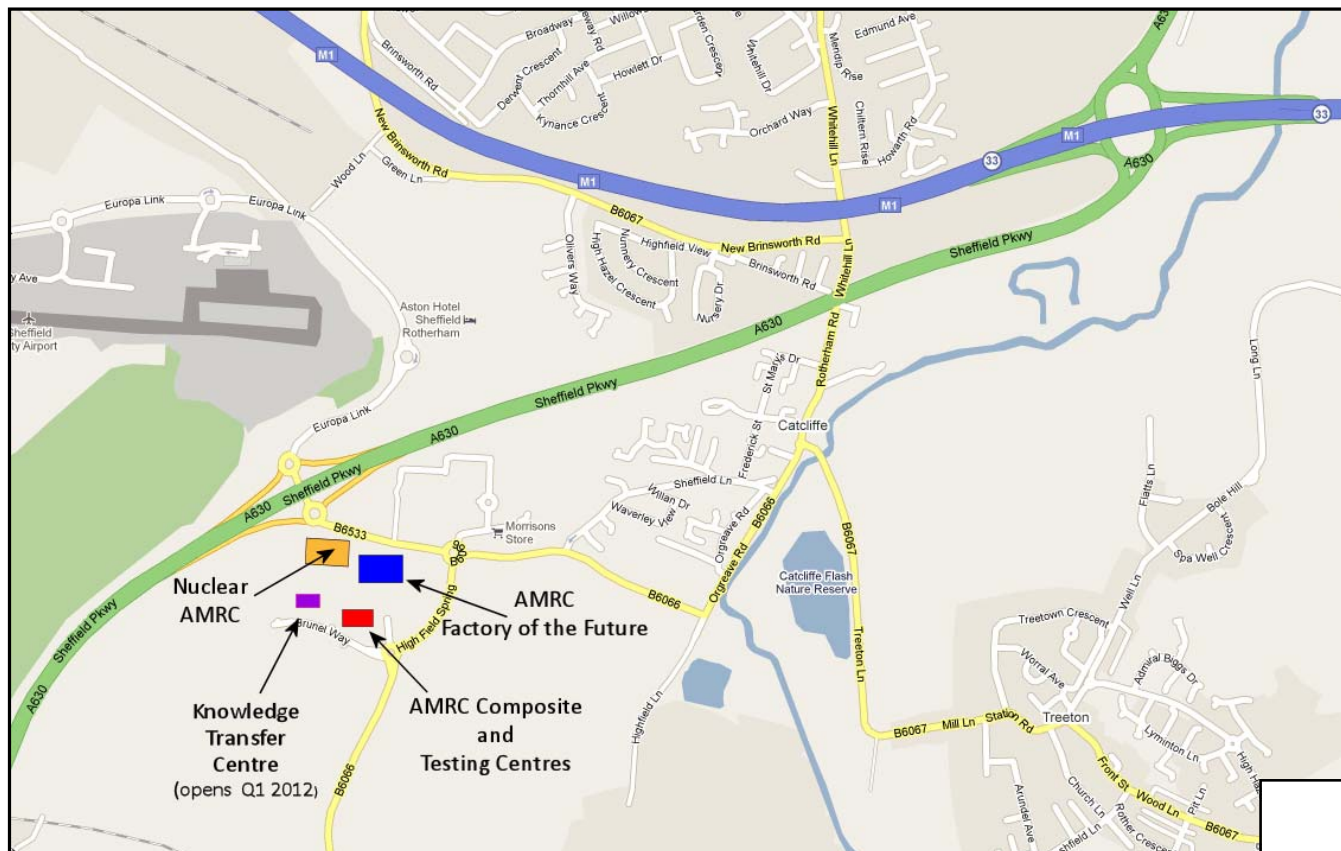
How to get to the AMRC and Nuclear AMRC on The Advanced Manufacturing Park



From **Junction 33 of the M1** take the **A630 Sheffield Parkway**, follow the **Sheffield City Centre** signs
As you are heading towards Sheffield City Centre, take the **first turn** off the **A630** dual carriageway.
Take the **first left** at the roundabout, heading towards Morrison's Supermarket.

At the next roundabout, take the third exit, signposted Handsworth B6066.

At the top of the hill, take the third exit – you are now approaching the **AMRC** facilities
For the **Nuclear AMRC**, take the second exit from the roundabout and then turn first right.



The facilities are served by the TM Travel A1 Bus Service.
Timetable details are available on the Travel South Yorkshire website
<http://www.travelsouthyorkshire.com/timetables/sheffield/328.htm>

AMRC with Boeing,
Rolls-Royce Factory of the Future,
Wallis Way,
The Advanced Manufacturing Park,
Catcliffe,
Rotherham
S60 5TZ

T: +44 (0)114 222 1747
F: +44 (0)114 222 7678

Nuclear AMRC,
The Advanced Manufacturing Park,
Brunel Way,
Rotherham
S60 5WG

T: +44 (0)114 222 9900
www.namrc.co.uk

P Parking is available in front of the
Factory of the Future and the
Composite and Testing Centres.

If either area is full, then please use
the other car park as overflow.

Parking for the Nuclear AMRC is
available in front of the building.

investing
in **your** future
European Regional Development Fund
European Union 